

MASSACHUSETTS DEPARTMENT OF TRANSPORTATION HIGHWAY DIVISION

TRANSPORTATION IMPROVEMENT PROJECT LOWER WESTFIELD ROAD AT HOMESTEAD AVENUE

IN THE CITY OF
HOLYOKE
HAMPDEN COUNTY

FEDERAL AID PROJECT NO. (NFA)

HOLYOKE
LOWER WESTFIELD RD AT
HOMESTEAD AVE

STATE	FED. AID PROJ. NO.	SHEET NO.	TOTAL SHEETS
MA		1	10

PROJECT FILE NO. 606045
PRELIMINARY RIGHT OF WAY PLANS
TITLE SHEET & INDEX

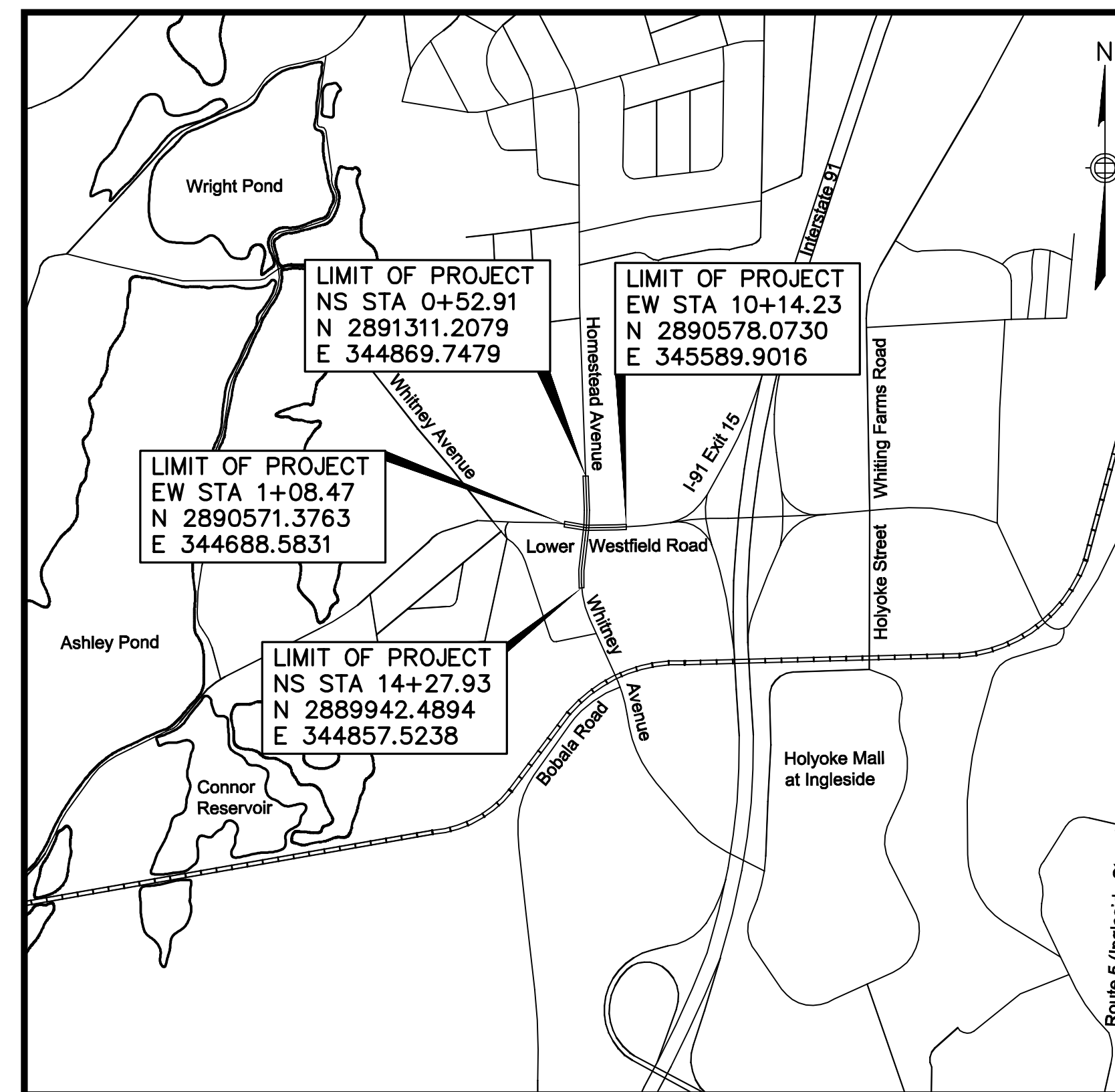
THE 1988 MASSACHUSETTS HIGHWAY DEPARTMENT STANDARD SPECIFICATIONS FOR HIGHWAYS AND BRIDGES (ENGLISH EDITION), THE SUPPLEMENTAL SPECIFICATIONS (ENGLISH EDITION), DATED JUNE 15, 2012; THE STANDARD SPECIAL PROVISIONS (LATEST EDITION); THE 2010 MASSDOT CONSTRUCTION STANDARD DETAILS; THE 2009 "MANUAL ON UNIFORM TRAFFIC CONTROL DEVICES FOR STREETS AND HIGHWAYS" WITH MASSACHUSETTS AMENDMENTS; THE 1990 STANDARD DRAWINGS FOR SIGNS AND SUPPORTS; THE 2006 STANDARD DRAWINGS AND DETAILS FOR THE DEVELOPMENT OF TRAFFIC MANAGEMENT PLANS; THE 1968 STANDARD DRAWINGS FOR TRAFFIC SIGNAL AND HIGHWAY LIGHTING; AND THE AMERICAN STANDARD FOR NURSERY STOCK (ANSI Z-60.1-2004); AND ALL AMENDMENTS WILL GOVERN.

INDEX

SHEET NO.	DESCRIPTION
1	TITLE SHEET & INDEX
2	TYPICAL SECTIONS
3-4	PROFILES
5	PARCEL SUMMARY SHEET
6	LOCATION PLAN
7-10	PROPERTY PLANS

DESIGN DESIGNATION

FUNCTIONAL CLASSIFICATION	URBAN MINOR ARTERIAL
DESIGN SPEED	= 35 mph*
ADT	= 18,600 vpd
ADT - 2028	= 22,863 vpd
K	= 0.096
D	= 53%
T (PEAK HOUR)	= 2%
T (AVERAGE DAY)	= 4%
DHV	= 2,172 vph
DDHV	= 1151 vph
	*15 mph FOR WEST LEG OF INTERSECTION (LOWER WESTFIELD ROAD)



LENGTH OF PROJECT (COMBINED ROADS) = 2,277.43 FEET = 0.431 MILES
SCALE - AS NOTED

LIST OF DRAWING REVISIONS

DATE	DESCRIPTION	REV#
5/2/13	Per 4/30/13 ROW Community Compliance Comments	13
4/18/13	Revised per 4/18/13 State ROW Email Comments	12
4/15/13	Revised per 3/6/13 Comments and Utility Coordination	11
3/1/13	Revised per 75% Submission	10
1/11/13	Responses to ROW and Municipal ROW Comments	9
11/27/12	Revised per 75% Submission	8
8/29/12	Revised to per massDOT - ROW Bureau	7
8/28/12	Responses to Right-Of-Way DPH Comments	6
8/24/12	Responses to Right-Of-Way DPH Comments	5
8/14/12	Responses to Right-Of-Way DPH Comments	4
7/3/12	Per comments dated by MassDOT dated 6/29/2012	3
6/19/12	Per comments dated by MassDOT dated 3/6/2012	2
1/25/12	Per comments dated by MassDOT dated 9/23/2011	1

TRANSPORTATION



AECOM TECHNICAL SERVICES, Inc.
250 Apollo Drive
Chelmsford, Massachusetts 01824
T 978.905.2100 F 978.905.2101

www.aecom.com



RECOMMENDED FOR APPROVAL

DEPARTMENT OF TRANSPORTATION
FEDERAL HIGHWAY ADMINISTRATION

APPROVED

DIVISION ADMINISTRATOR Date

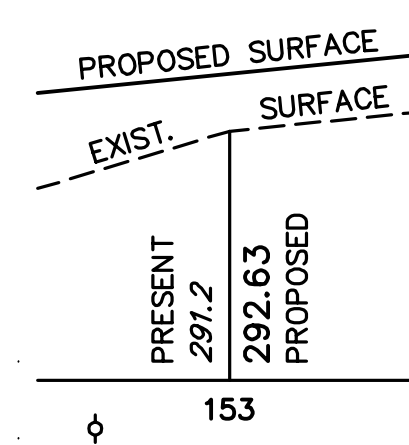
CHIEF ENGINEER Date

APPROVED

DIVISION ADMINISTRATOR Date

CONVENTIONAL SIGNS

COUNTY, CITY or TOWN BOUNDARY LINE	---
COUNTY, CITY or TOWN SIDE LINE	----
FENCE LINE	x-----x
BASE or SURVEY LINE	S47°-21'-41"E 4336.03'
RIGHT OF WAY LINE	-----
CULVERT	-----



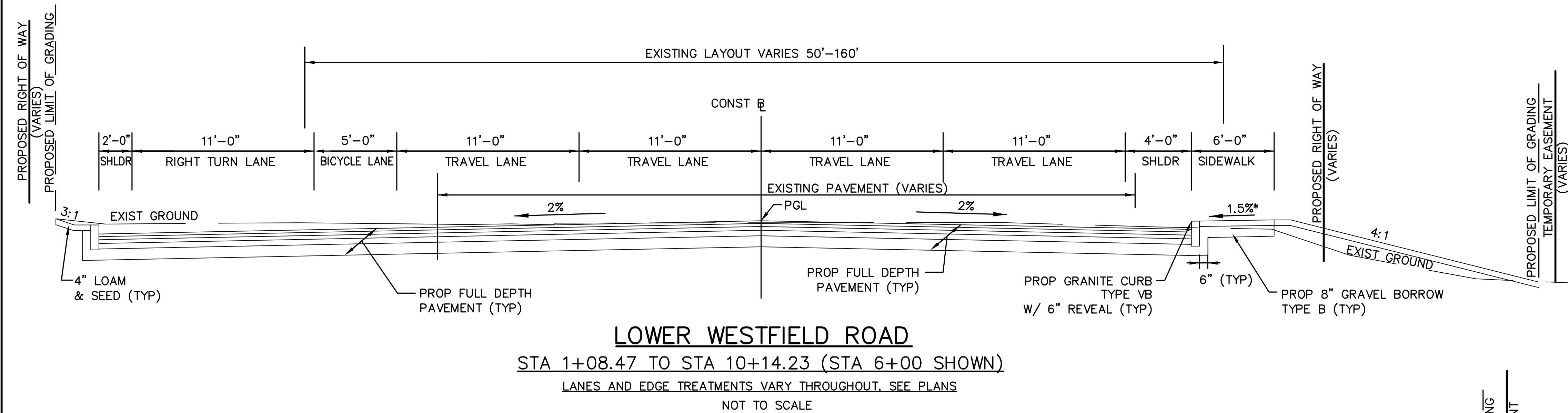
ELEVATIONS

UTILITY POLE 153

HOLYOKE
LOWER WESTFIELD RD AT
HOMESTEAD AVE

STATE	FED. AID PROJ. NO.	SHEET NO.	TOTAL SHEETS
MA		2	10

PROJECT FILE NO. 606045
PRELIMINARY RIGHT OF WAY PLANS
TYPICAL SECTIONS



FULL DEPTH PAVEMENT

SURFACE COURSE: 3.5" SUPERPAVE PLACED IN TWO LAYERS, 1.75" SUPERPAVE SURFACE COURSE-12.5 (SSC-12.5) OVER 2.25" SUPERPAVE INTERMEDIATE COURSE-19.0 (SIC-19.0) & ASPHALT EMULSION FOR TACK COAT (RS-1) AT 0.05 GAL/SY OVER HOT MIX ASPHALT BASE

BASE COURSE: 4" SUPERPAVE BASE COURSE-37.5 (SBC-37.5) PLACED IN ONE LAYER

SUBBASE: 4" DENSE GRADED CRUSHED STONE 8" GRAVEL BORROW TYPE B

DRIVEWAYS

SURFACE COURSE: 3.5" HOT MIX ASPHALT PLACED IN TWO LAYERS, 1.75" HOT MIX ASPHALT OVER 1.75" HOT MIX ASPHALT

SUBBASE: 8" GRAVEL BORROW TYPE B.

SIDEWALK

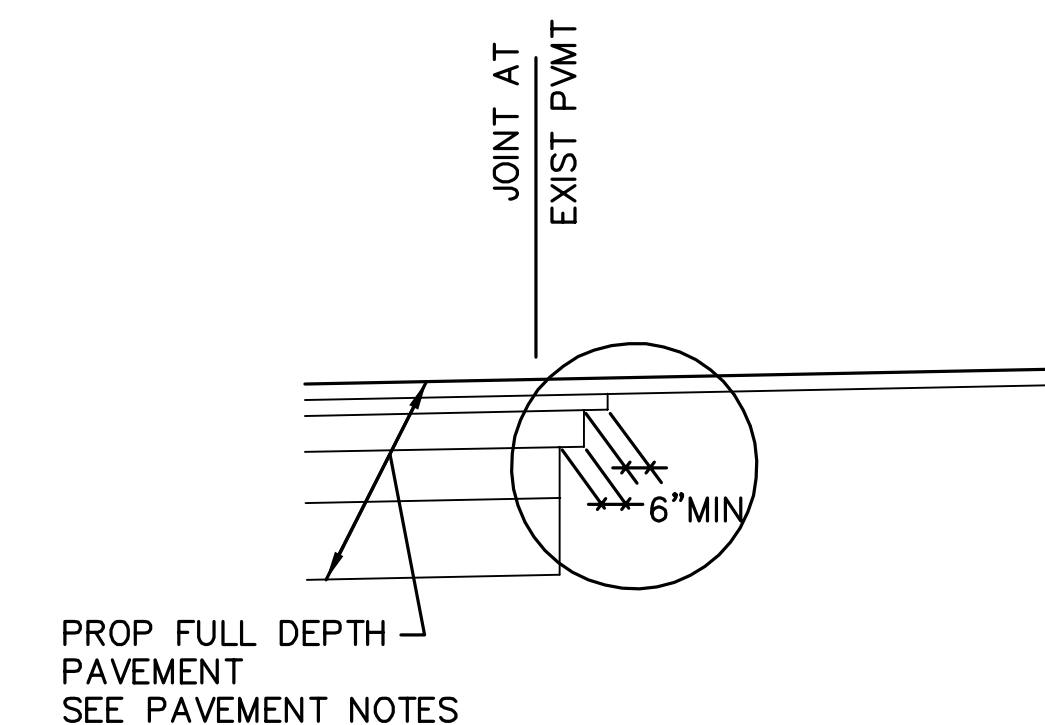
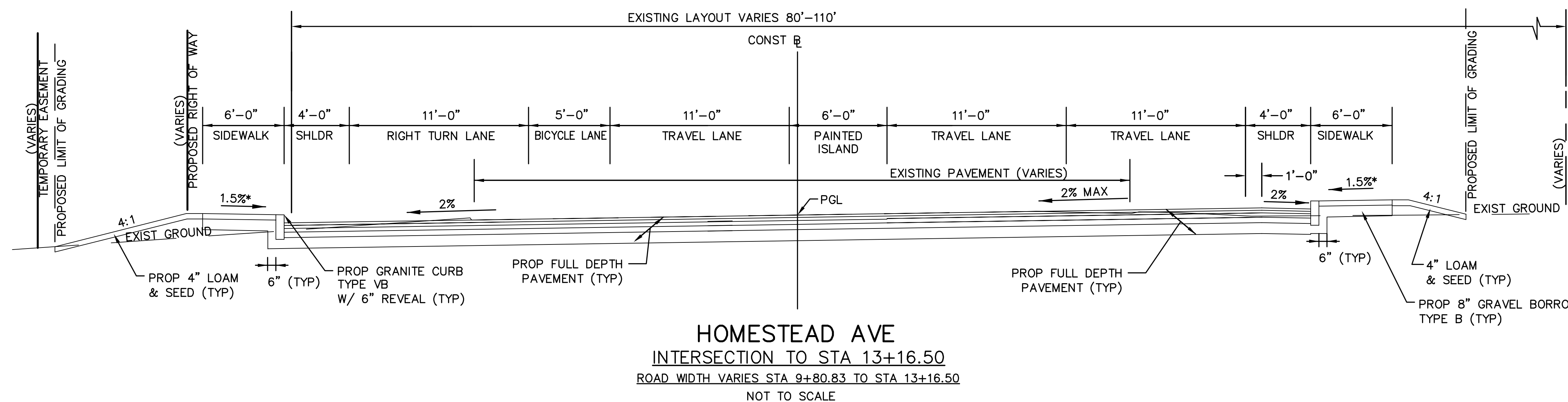
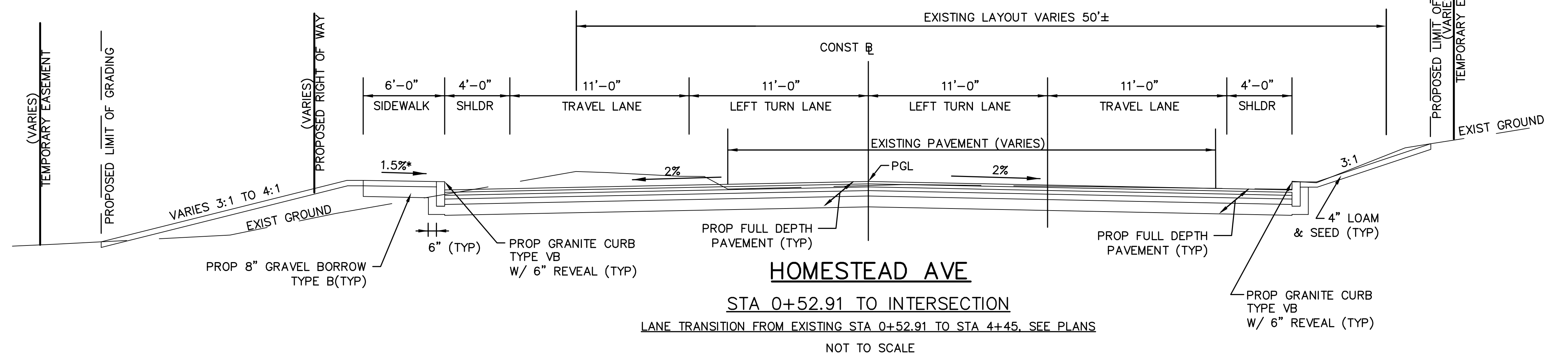
SURFACE COURSE: 4" CEMENT CONCRETE

SUBBASE: 8" GRAVEL BORROW TYPE B.

PROPOSED RESURFACING MILL AND OVERLAY AT LIMITS OF WORK

SURFACE COURSE: 1.75" SUPERPAVE SURFACE COURSE (SSC-12.5) OVER 1.75" PAVEMENT MILLING
SEE PAVEMENT JOINT DETAIL BELOW

NOTE:
1. SEE PLANS FOR DRIVEWAY LOCATIONS AND SIDEWALK LIMITS.



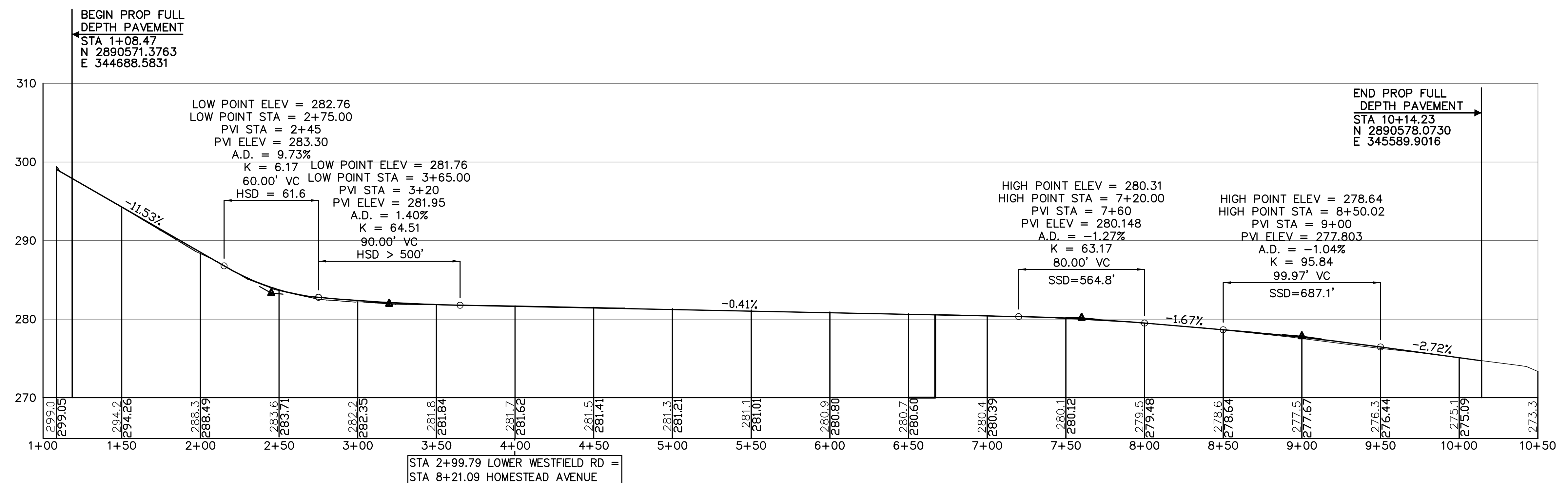
*TOLERANCE FOR CONSTRUCTION +/- 0.5%

DESIGNED BY
DRAWN BY
CHECKED BY

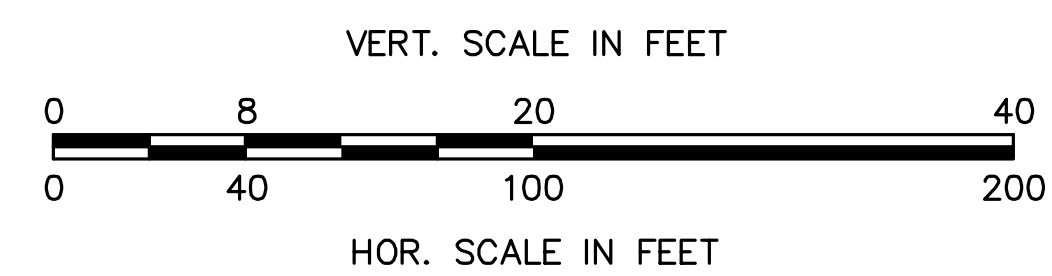
HOLYOKE
LOWER WESTFIELD RD AT
HOMESTEAD AVE

STATE	FED. AID PROJ. NO.	SHEET NO.	TOTAL SHEETS
MA		3	10

PROJECT FILE NO. 606045
PRELIMINARY RIGHT OF WAY PLANS
PROFILE



LOWER WESTFIELD ROAD

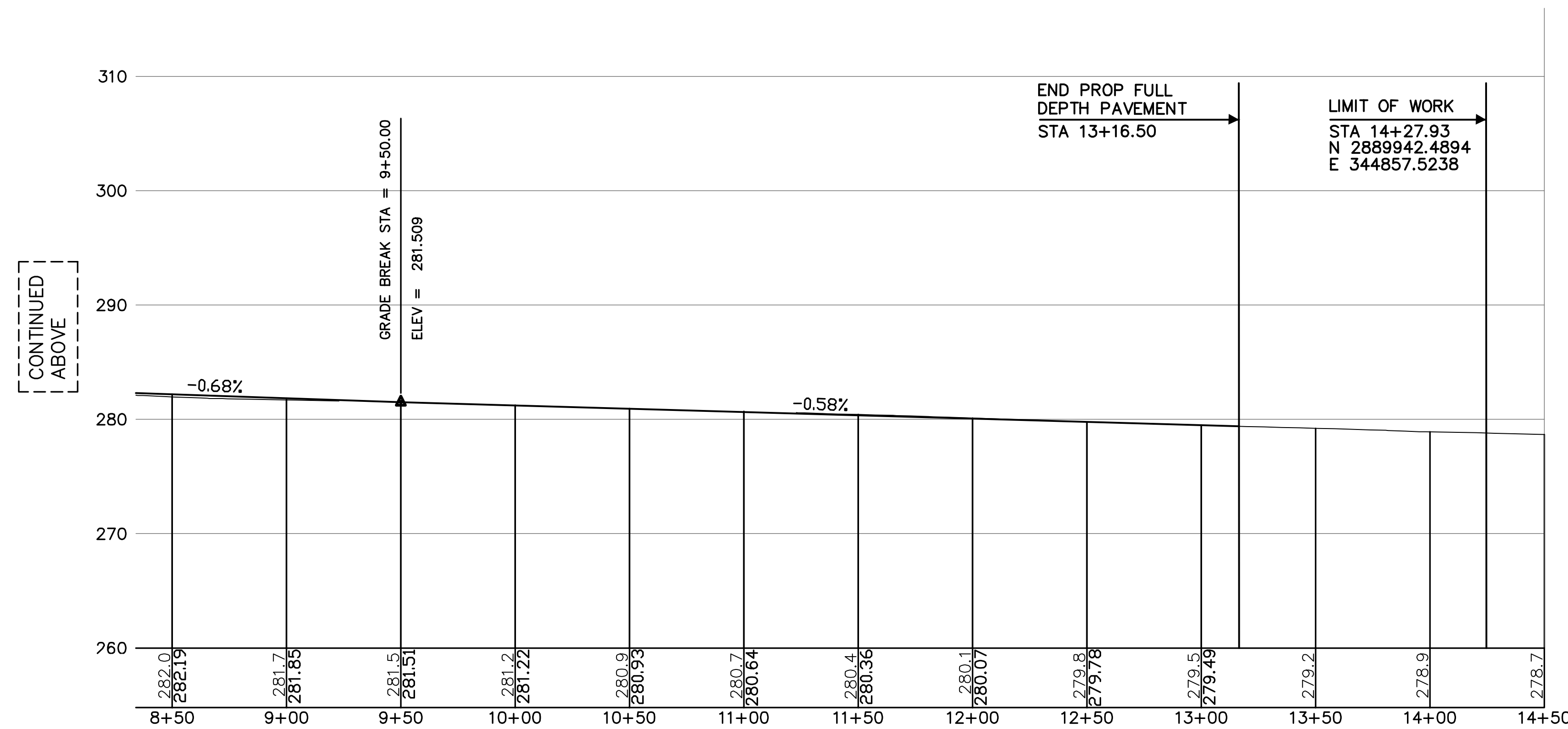
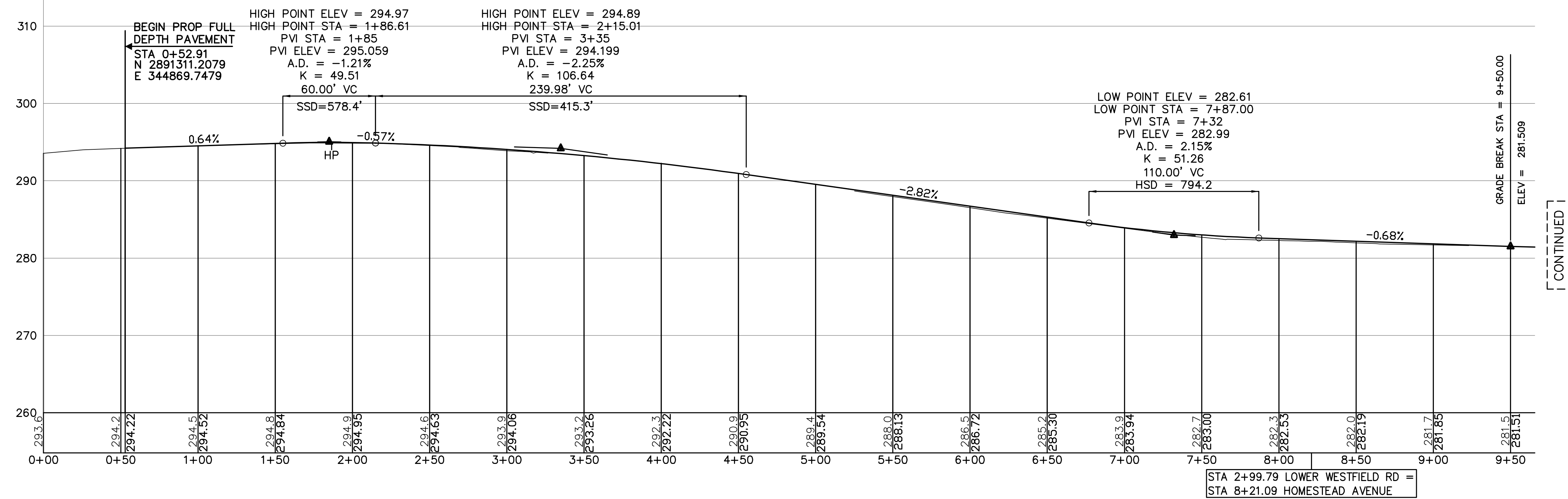


DESIGNED BY _____
DRAWN BY _____
CHECKED BY _____

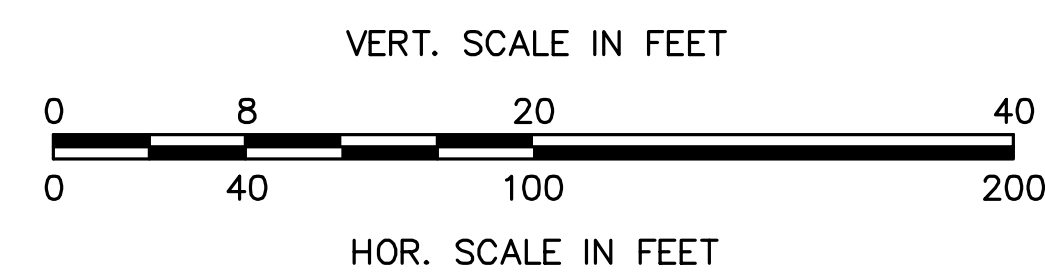
HOLYOKE
LOWER WESTFIELD RD AT
HOMESTEAD AVE

STATE	FED. AID PROJ. NO.	SHEET NO.	TOTAL SHEETS
MA		4	10

PROJECT FILE NO. 606045
PRELIMINARY RIGHT OF WAY PLANS
PROFILE



HOMESTEAD AVE



DESIGNED BY _____
 DRAWN BY _____
 CHECKED BY _____

DATE _____

HOLYOKE
 LOWER WESTFIELD RD AT
 HOMESTEAD AVE

STATE	FED. AID PROJ. NO.	SHEET NO.	TOTAL SHEETS
MA		5	10
PROJECT FILE NO. 606045			

PRELIMINARY RIGHT OF WAY PLANS
 PARCEL SUMMARY SHEET

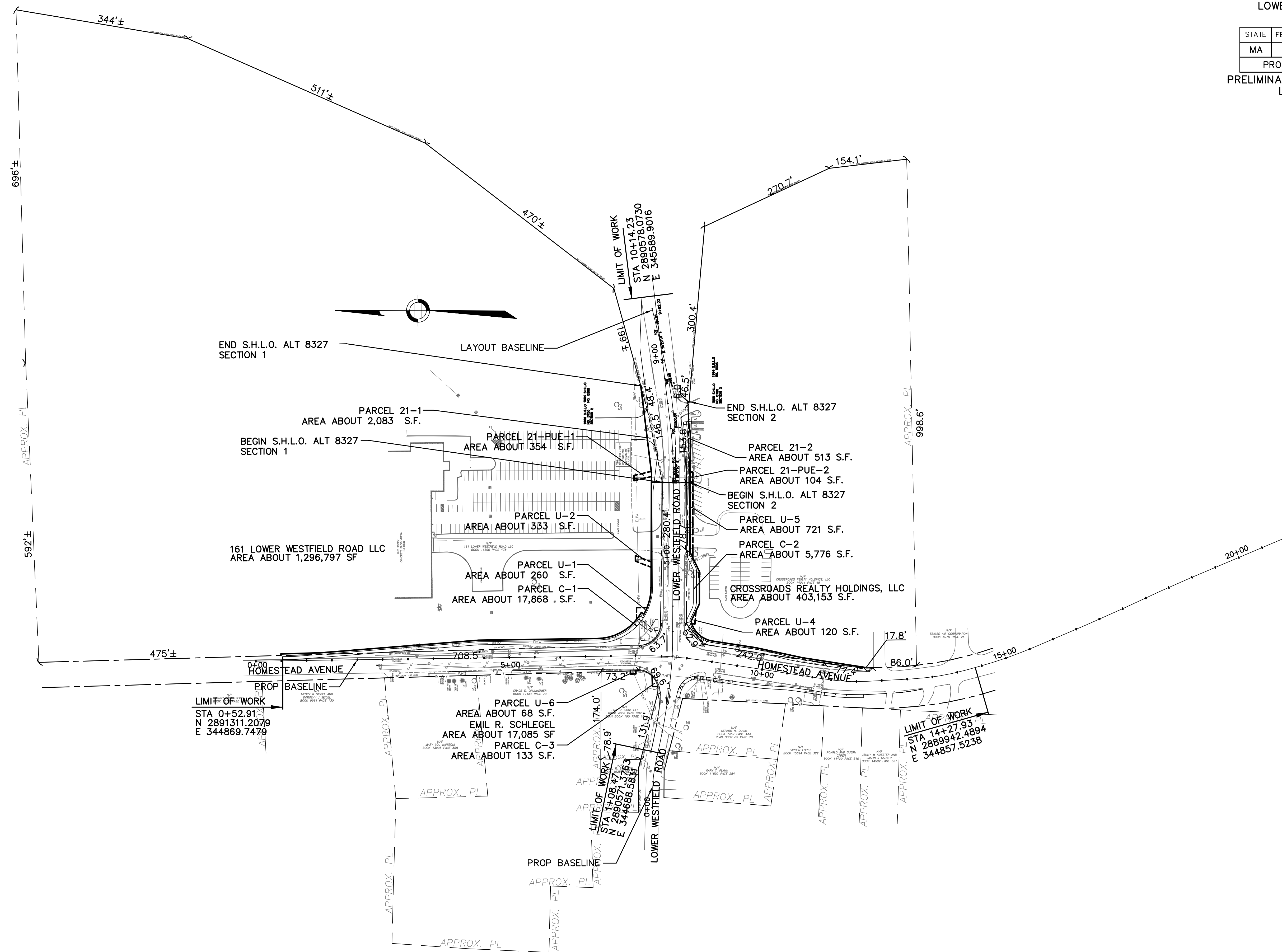
PARCEL NO.	PLAN SHEET NO.	TITLEHOLDER	TITLE REFERENCE				AREA (S.F.+/-)						TOTAL PROPERTY AREA (S.F.)	REMARKS	
			DEED BOOK	PAGE NO.	LCC NO.	CERT NO.	TAKEN		EASEMENT		TOTAL TAKEN	TOTAL REMAINING			
							STATE	CITY	TYPE	AREA					
21-1	7,8	161 LOWER WESTFIELD ROAD, LLC	16390	478			2,083					19,951	1,276,846	1,296,797	
C-1	7,8,9	161 LOWER WESTFIELD ROAD, LLC	16390	478				17,868							ROADWAY WIDENING, SIDEWALK
TE-1	7,8,9	161 LOWER WESTFIELD ROAD, LLC	16390	478					TEMP.	37,578					GRADING, TURF ESTABLISHMENT, SLOPE WORK
U-1	7	161 LOWER WESTFIELD ROAD, LLC	16390	478					PERM.	260					PERMANENT UTILITY RELOCATION, POLE AND GUYS
U-2	7	161 LOWER WESTFIELD ROAD, LLC	16390	478					PERM.	333					PERMANENT UTILITY RELOCATION, POLE AND CONDUIT
21-PUE-1	7,8	161 LOWER WESTFIELD ROAD, LLC	16390	478					PERM.	354					PERMANENT UTILITY RELOCATION, POLE AND CONDUIT
21-2	7,8	CROSSROADS REALTY HOLDINGS, LLC	14014	49			431					6,289	396,864	403,153	
C-2	7,8,10	CROSSROADS REALTY HOLDINGS, LLC	14014	49				5,776							ROADWAY WIDENING, SIDEWALK, BUS PULLOUT, WHEELCHAIR RAMP ACCESS
TE-4	7,10	CROSSROADS REALTY HOLDINGS, LLC	14014	49					TEMP.	2,575					GRADING, REMOVE AND RESET HOLYOKE PEDIATRIC ASSOCIATES SIGN
21-TE-5	8	CROSSROADS REALTY HOLDINGS, LLC	14014	49					TEMP.	95					WHEELCHAIR RAMP CONSTRUCTION
U-4	7	CROSSROADS REALTY HOLDINGS, LLC	14014	49					PERM.	120					PERMANENT UTILITY RELOCATION, POLE AND CONDUIT
U-5	7,8	CROSSROADS REALTY HOLDINGS, LLC	14014	49					PERM.	721					PERMANENT UTILITY RELOCATION, POLE AND CONDUIT
21-PUE-2	7,8	CROSSROADS REALTY HOLDINGS, LLC	14014	49					PERM.	104					PERMANENT UTILITY RELOCATION, CONDUIT
C-3	7	EMIL R. SCHLEGEL	190	18				133				133	16,952	17,085	TRAFFIC SIGNAL MAST ARM
TE-2	7	EMIL R. SCHLEGEL	190	18					TEMP.	4,444					GRADING, TURF ESTABLISHMENT, SLOPE WORK
U-6	7	EMIL R. SCHLEGEL	190	18					PERM.	68					PERMANENT UTILITY RELOCATION, POLE
TE-3	7,9	GRACE S. DAUNHEIMER	17184	70					TEMP.	2,449					GRADING, TURF ESTABLISHMENT, SLOPE WORK

DESIGNED BY _____
 DRAWN BY _____
 CHECKED BY _____
 DATE _____

HOLYOKE
 LOWER WESTFIELD RD AT
 HOMESTEAD AVE

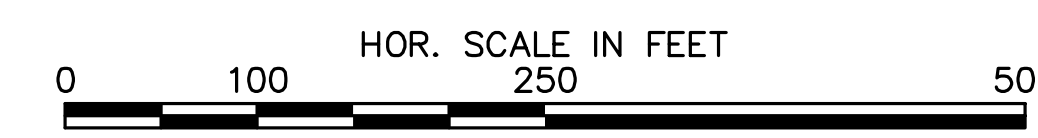
STATE	FED. AID PROJ. NO.	SHEET NO.	TOTAL SHEETS
MA		6	10

PROJECT FILE NO. 606045
 PRELIMINARY RIGHT OF WAY PLANS
 LOCATION PLAN



DESIGNED BY _____
 DRAWN BY _____
 CHECKED BY _____

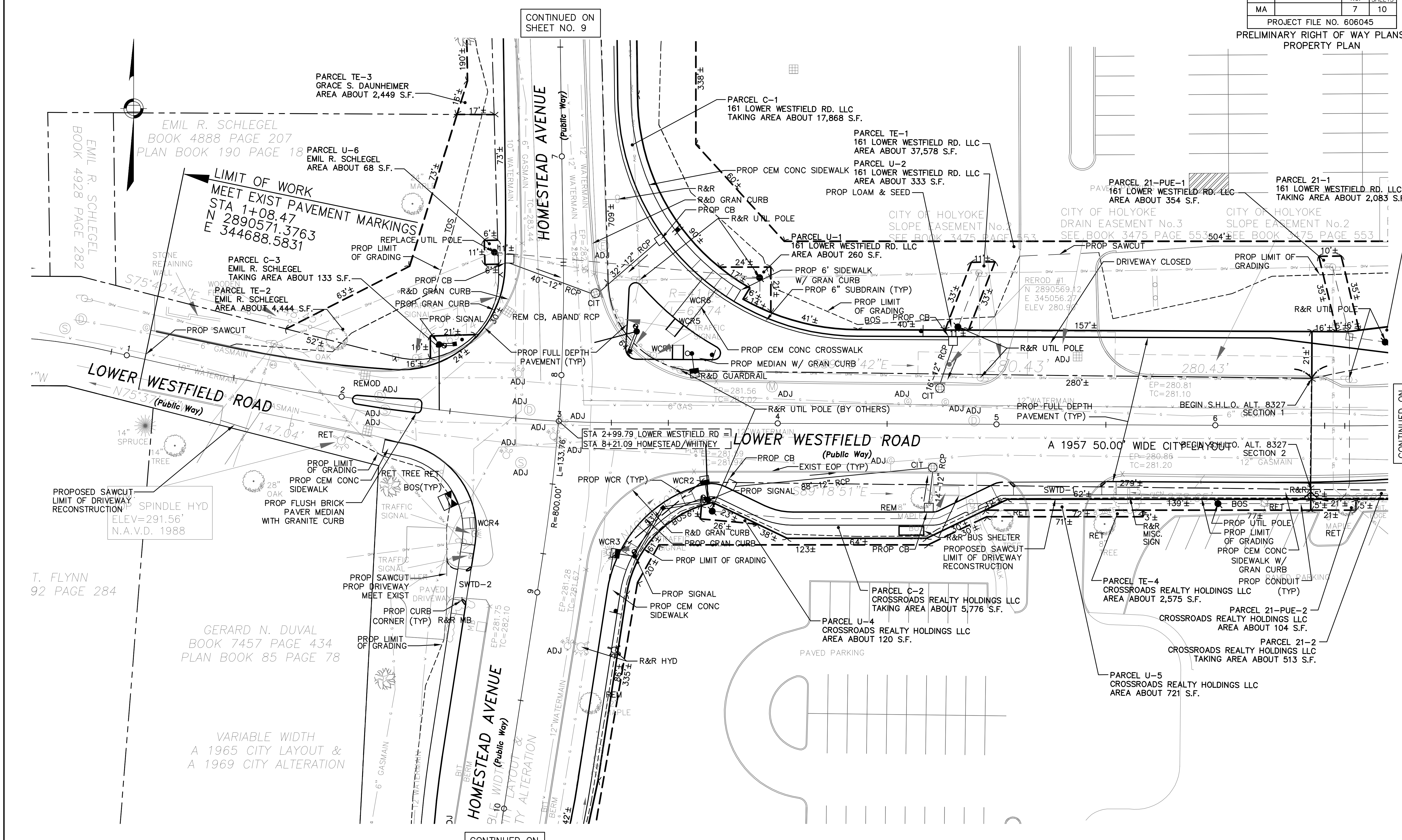
NOTE:
 PLAN INCLUDES TAKINGS IN MUNICIPAL AREAS ALONG LOWER
 WESTFIELD ROAD FOR INFORMATIONAL PURPOSES ONLY.



HOLYOKE
LOWER WESTFIELD RD AT
HOMESTEAD AVE

STATE	FED. AID PROJ. NO.	SHEET NO.	TOTAL SHEETS
MA		7	10

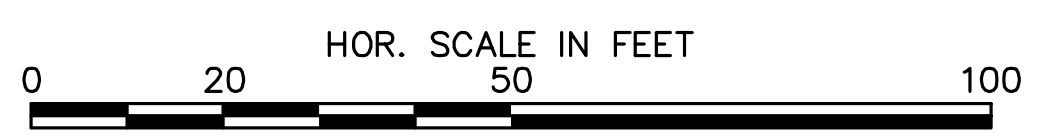
PROJECT FILE NO. 606045
 PRELIMINARY RIGHT OF WAY PLANS
 PROPERTY PLAN



CONTINUED ON
 SHEET NO. 9

CONTINUED ON
 SHEET NO. 8

CONTINUED ON
 SHEET NO. 10



EMIL R. SCHLEGEL
 BOOK 4888 PAGE 207
 PLAN BOOK 190 PAGE 18

EMIL R. SCHLEGEL
 BOOK 4928 PAGE 282

LIMIT OF WORK
 MEET EXIST PAVEMENT MARKINGS
 STA 1+08.47
 N 2890571.3763
 E 344688.5831

PROPOSED SAWCUT
 LIMIT OF DRIVEWAY
 RECONSTRUCTION
 SPINDLE HYD
 ELEV=291.56'
 N.A.V.D. 1988

T. FLYNN
 92 PAGE 284

GERARD N. DUVAL
 BOOK 7457 PAGE 434
 PLAN BOOK 85 PAGE 78

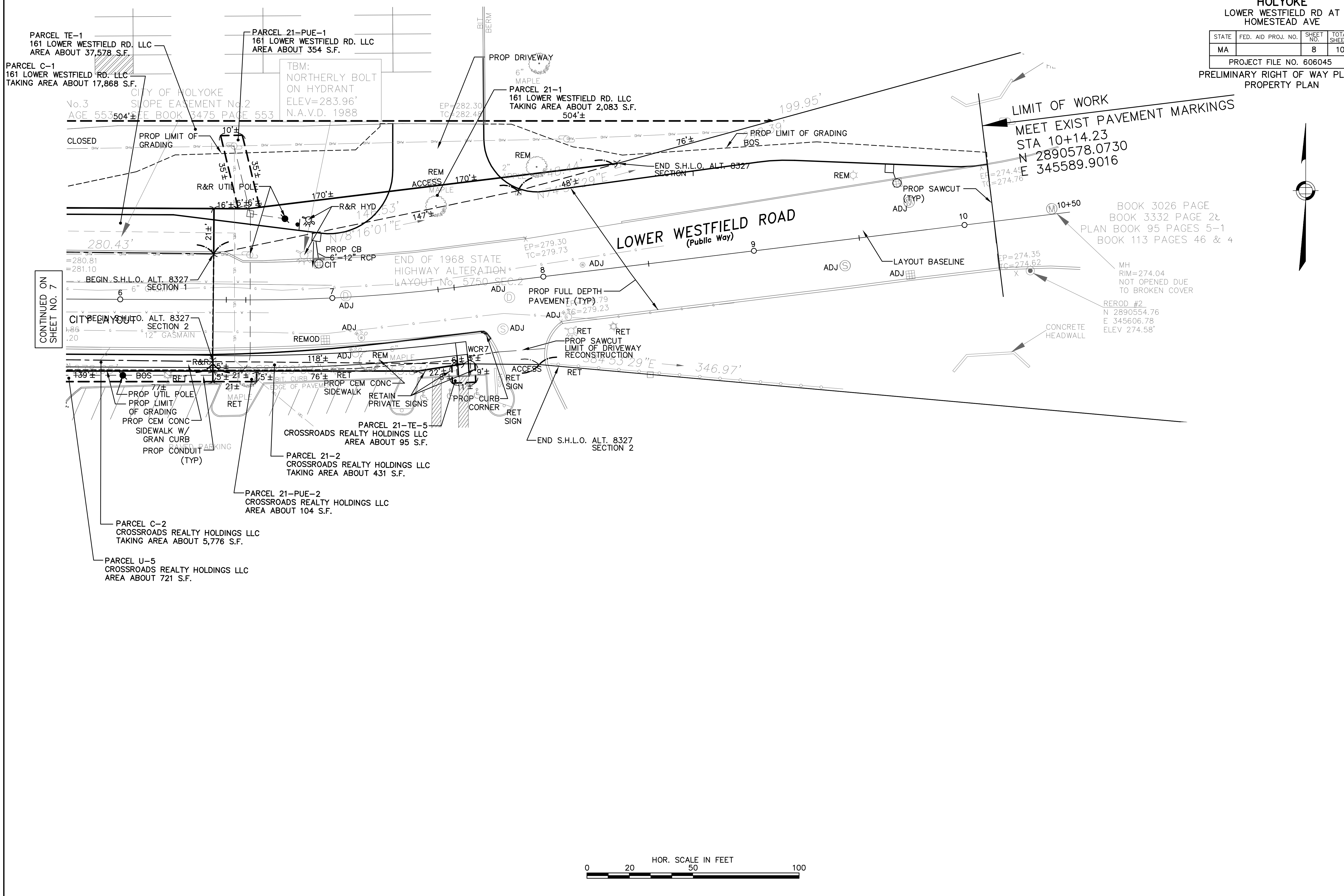
VARIABLE WIDTH
 A 1965 CITY LAYOUT &
 A 1969 CITY ALTERATION

DESIGNED BY
 DRAWN BY
 CHECKED BY

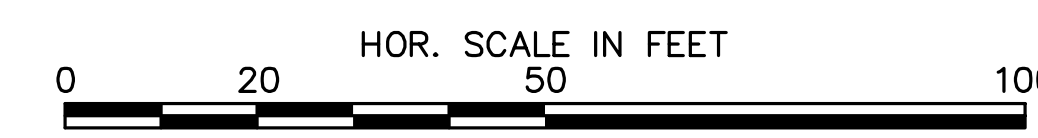
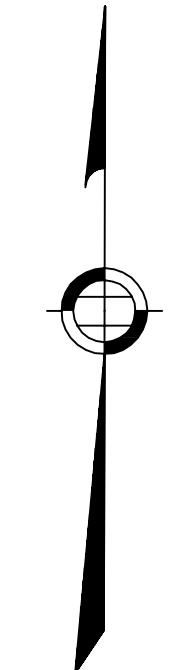
HOLYOKE
LOWER WESTFIELD RD AT
HOMESTEAD AVE

STATE	FED. AID PROJ. NO.	SHEET NO.	TOTAL SHEETS
MA		8	10

PROJECT FILE NO. 606045
 PRELIMINARY RIGHT OF WAY PLANS
 PROPERTY PLAN



CONTINUED ON SHEET NO. 7

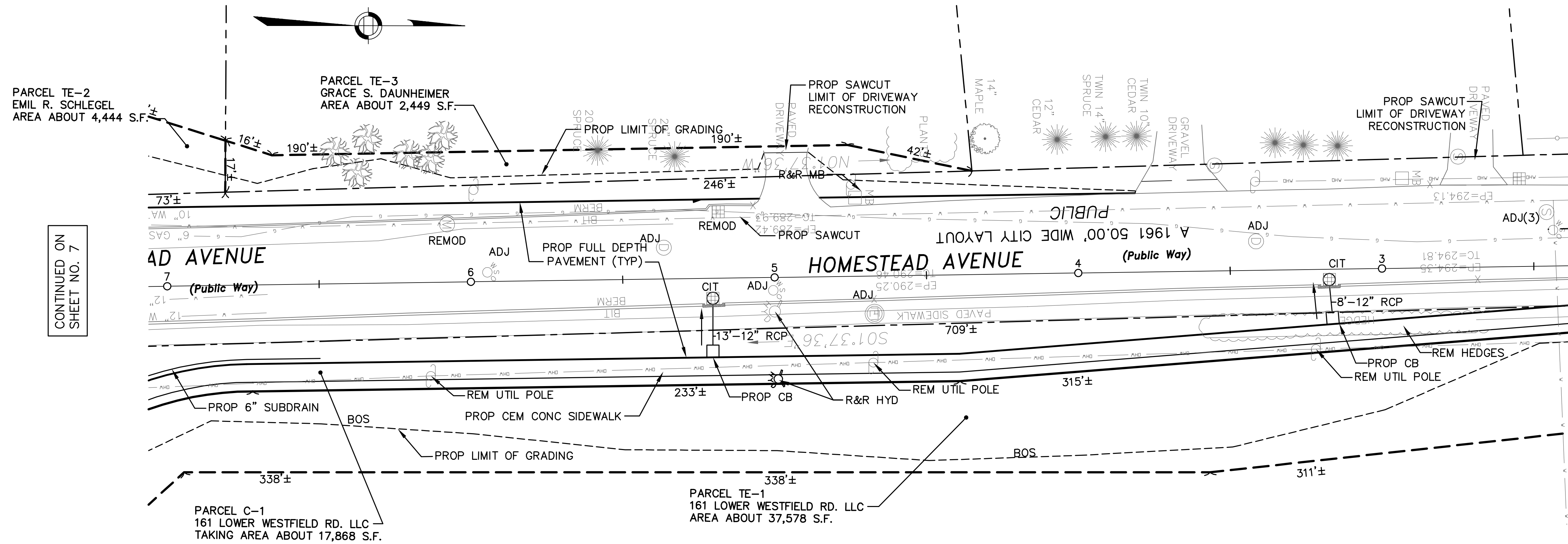


DESIGNED BY _____
 DRAWN BY _____
 CHECKED BY _____

HOLYOKE
 LOWER WESTFIELD RD AT
 HOMESTEAD AVE

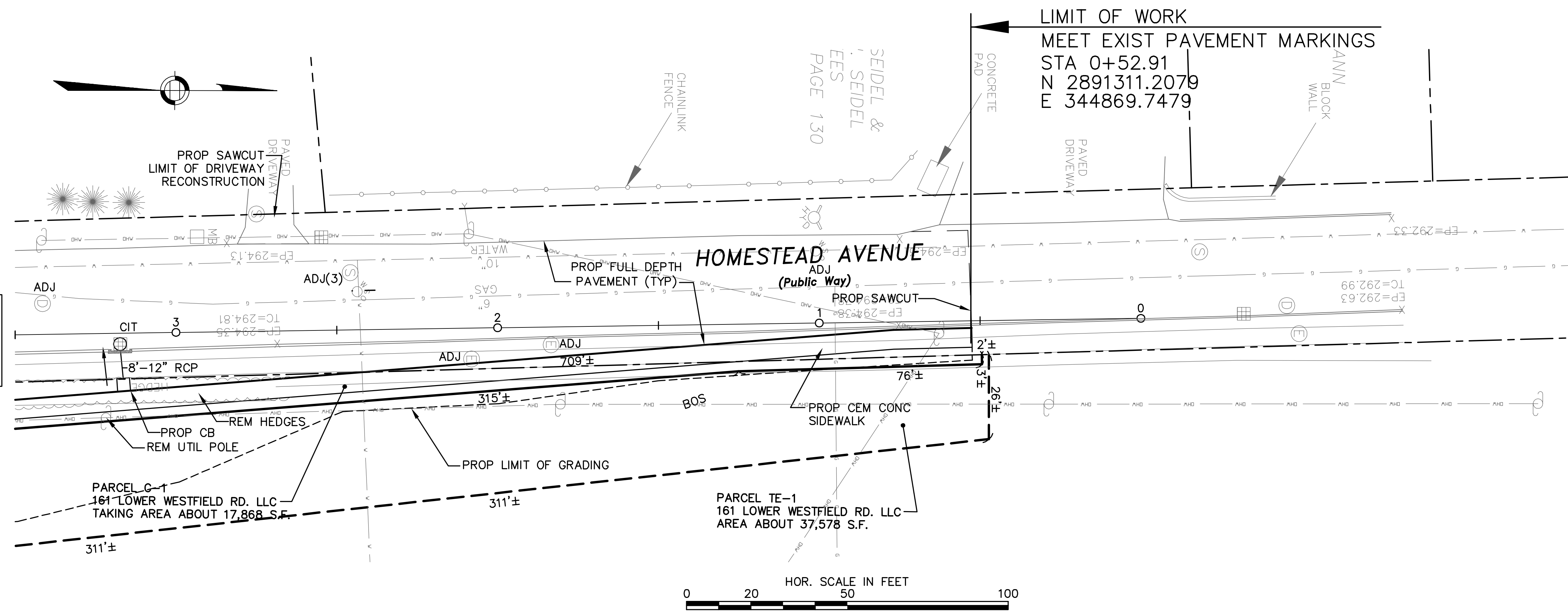
STATE	FED. AID PROJ. NO.	SHEET NO.	TOTAL SHEETS
MA		9	10

PROJECT FILE NO. 606045
 PRELIMINARY RIGHT OF WAY PLANS
 PROPERTY PLAN

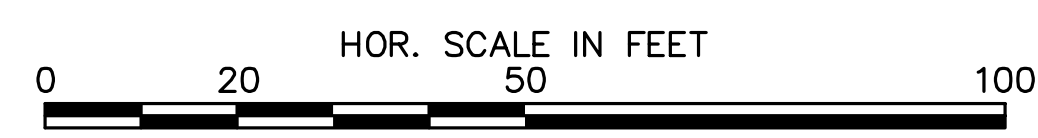


CONTINUED ON
SHEET NO. 7

CONTINUED
BELOW



CONTINUED
ABOVE

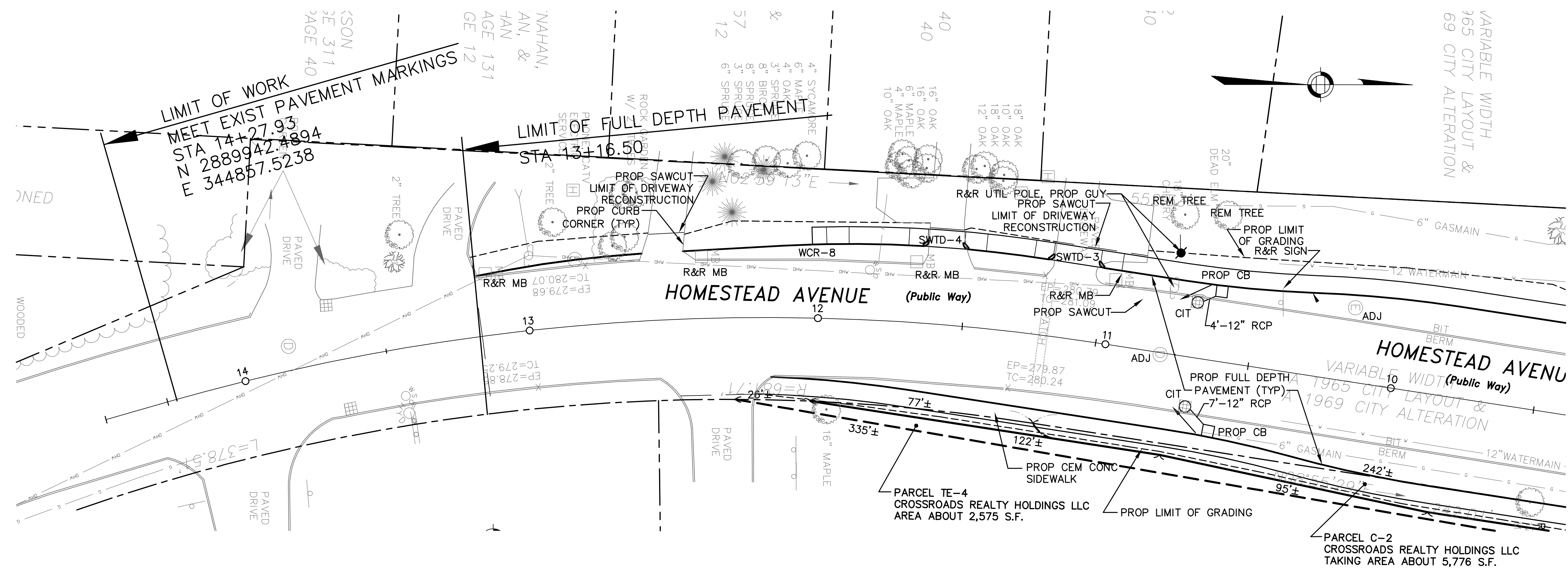


DATE: _____
 DESIGNED BY: _____
 DRAWN BY: _____
 CHECKED BY: _____

HOLYOKE
LOWER WESTFIELD RD AT
HOMESTEAD AVE

STATE	FED. AID PROJ. NO.	SHEET NO.	TOTAL SHEETS
MA		10	10

PROJECT FILE NO. 606045
PRELIMINARY RIGHT OF WAY PLANS
PROPERTY PLAN



CONTINUED ON
SHEET NO. 7

DESIGNED BY
DRAWN BY
CHECKED BY